

LUBRICATION SYSTEM

2 years
Warranty*



*certain conditions may apply

PROTECTS YOUR EQUIPMENT

Lack of grease, heavy loads, dust and water prematurely wears out the moving parts of your machine.
Our systems offer performance, reliability and efficiency.

Advantages

- Continuous lubrication at regular intervals.
- Each point receives an optimal quantity of lubricant.
- Eliminates /reduces lost time due to having to stop the machine for maintenance.
- Parts and Equipment last longer.
- No points can be neglected or forgotten.
- Reduces the consumption of energy due to the reduction of friction.
- Permits significant savings of lubricant.
- The system uses all types of grease. No make is obligated.
- Reduces maintenance costs.

Industries

- Off-road & Excavation
- On-road & municipal
- Mining & Aggregates
- Port
- Agriculture
- Forestry
- Airport
- Paving
- Waste & Recycling
- Industrial & conveyor

Financing available !

Efficiency & Reliability **ALLFETT.**

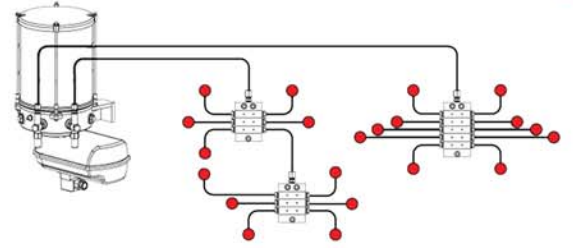
ALLFETT.

Operating mode

PROGRESSIVE LUBRICATION SYSTEM EP-2

An electric drive permits the rotation of a cam which pushes a pump element. High pressure then pushes the grease towards the distribution blocs which distribute the correct amount of grease to each point.

Each system is calibrated beforehand in order to distribute the proper amount of grease to each point.



Technical characteristics

- Functions up to a pressure of 4175 PSI (290 BARs).
- Uses a grease of high resistance (NLGI 2)
- Permits detection if there is a point that is blocked (electric pressure switch with gauge)
- Permits to have a "T" fitting as a point for a manual feed if the system fails.
- functions once the machine is running (connection is through the ignition).
- Hoses are installed on the operator's side so they are visible and are protected by a shielding.

THE ALLFETT PROGRESSIVE LUBRICATION SYSTEM INCLUDES;

- Pump with one or many pumping elements.
The reservoir is available in many sizes; 1.5L, 4.5L, 6L, 14L
- Electric card installed in the cabin away from the elements.
- Progressive distribution valves already calibrated.
- Hoses and fittings which are easily re-usable and available.
- Many other options to customize your system.

OPTIONS

- Filling cover
- Filling nozzle & gun
- Quick-coupler for filling
- Strainer
- Electric pressure switch with gauge
- Shielding
- And more.

Technical specifications



ELECTRIC PUMP ALL-1 & ALL-10

Power source	12VDC, 24VDC
Maximum pressure	400 bars
Protection class	IP54
Recommended lubricant	Lithium grease NLGI 0-1-2
Pump element	1 to 6
Pump element capacity	2.5 – 3 cm ³ /min.
Working temperature	-25°C to +80°C.
Reservoir capacity (litre)	4.5, 6 and 14



ELECTRONIC CONTROL CARD

Voltage	10-30V
Control	Timer & Pulse



DISTRIBUTION VALVE

Material	Galvanized steel
Type	Standard
	Monoblock
	Long distance

Your authorized distributor:

ALLFETT.

Alltech
Group

Our network strength!

P.O. Box 144, Vaudreuil-Dorion
Qc, J7V 5W1
1.855.730.5555
www.groupealltech.com

